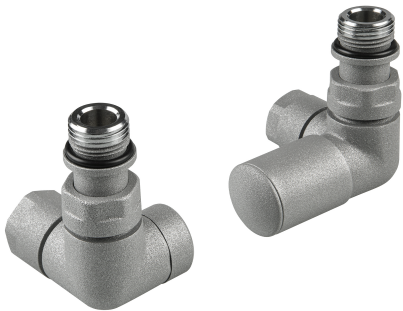


PRODUCT DATASHEET

THU-201 Hugo Double Angle radiator valve

tissino
Designed to Inspire
Made to Experience



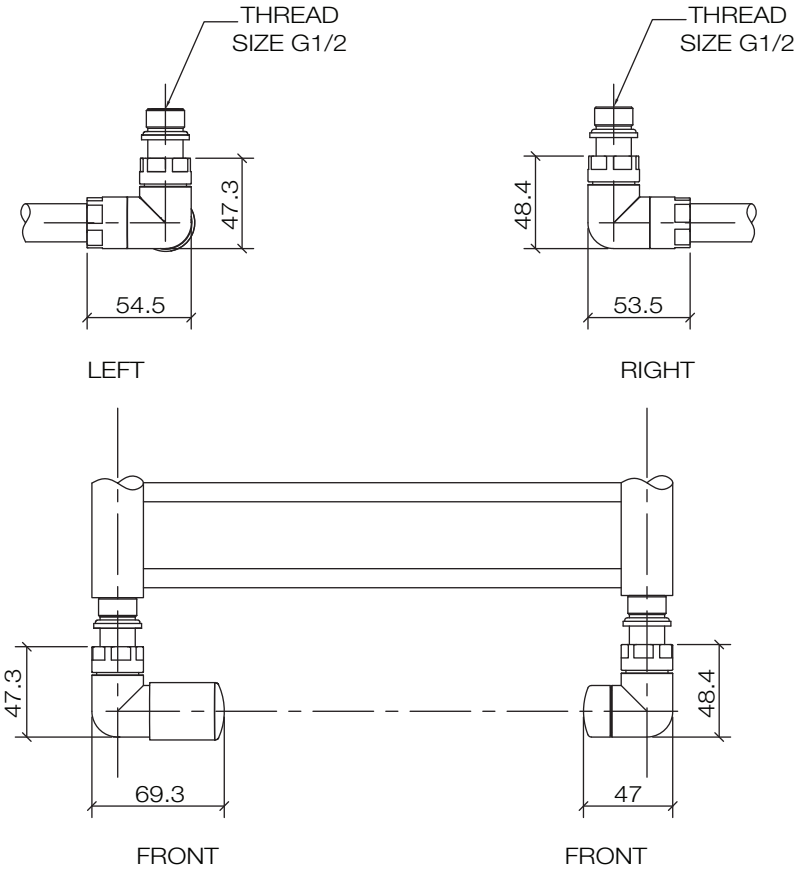
Regulating valves designed to complement the range of Hugo2 heated towel rails.

PRODUCT DETAILS

Finishes	Electrostatic powder coated; chrome plated	
Dimensions	Height	47mm
	Width (control valve)	70mm
	Width (lockshield valve)	75mm
	Depth	55mm
Material	Brass	
Radiator connection	G 1/2 (1/2" BSP parallel)	
Supply connection	15mm compression	
Max temperature	120°C	
Max pressure	10 bar	
Warranty	5 years	
Codes	Anthracite	THU-201-AN
	Arabica	THU-201-AR
	Chrome	THU-201-CP
	Lusso Grey	THU-201-LG
	Matt Black	THU-201-MN
	Mont Blanc	THU-201-MB

See separate datasheet for information on matching towel rails, coloured pipes, thermostatic and dual fuel valves.

TECHNICAL DRAWING



Pipe fixing centers = towel rail pipe centerlines

