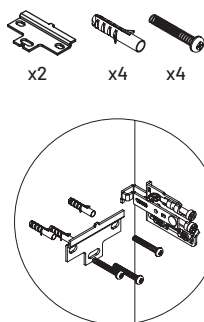
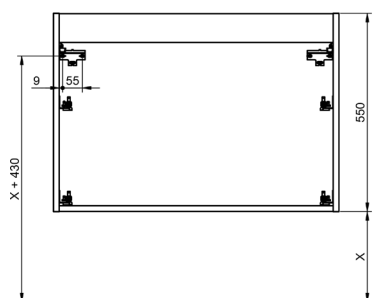
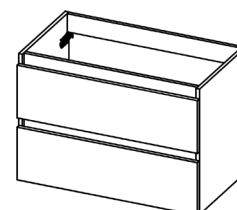
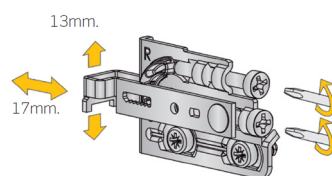


1. Hang the unit on the wall



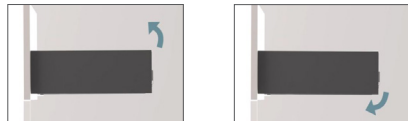
2. Level the unit, adjusting the hanger if necessary

*Level the unit once fitted to the wall

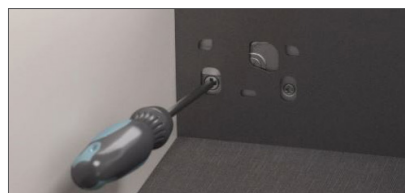


3. Adjustment of the IRON drawer (full extraction)

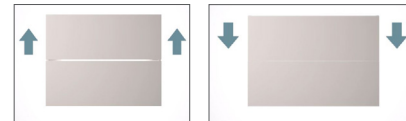
3.1 Adjust inclination



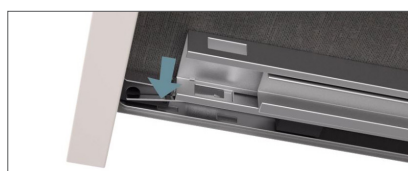
3.2 Lateral adjustment



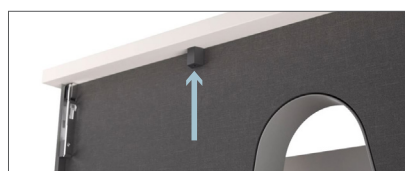
3.3 Height adjustment



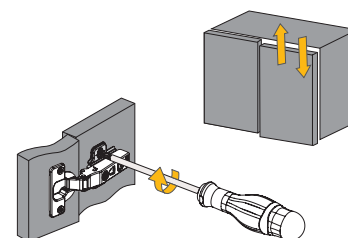
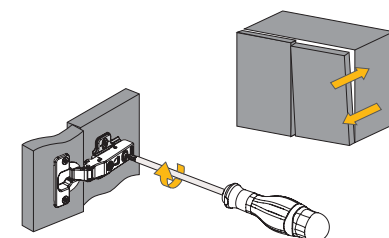
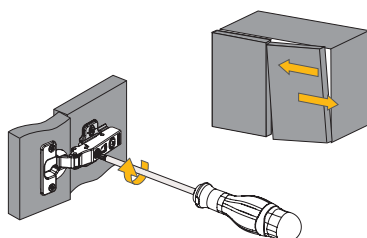
3.4 Remove the drawer: press the lower clip



3.5 Remove the drawer front: remove the screws and turn the screw behind the cover



4. Door regulation (for 80-100cm vanities)

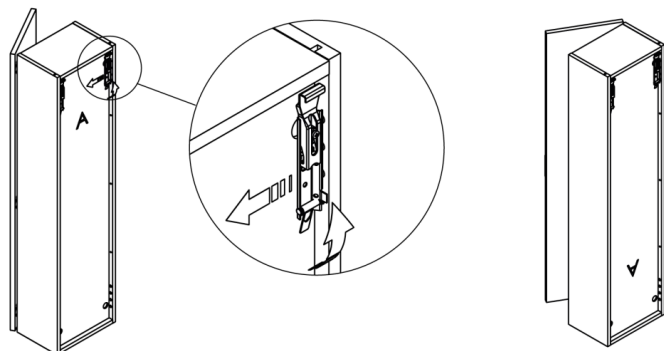


Failure to install per the installation instructions may invalidate your guarantee, please follow instructions carefully. In the unlikely event that this product should fail please contact the retailer from which the item was purchased.

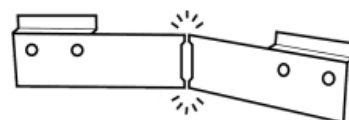
Installation Guide

1. Installation of tall units (Traser hangers)

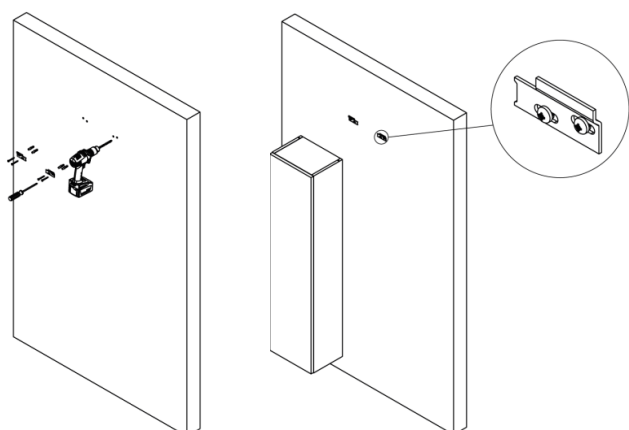
1.1 Choose the orientation of the door, where necessary change the position of the hangers



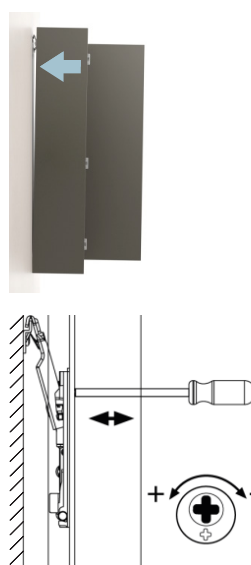
1.2 Separate the plates



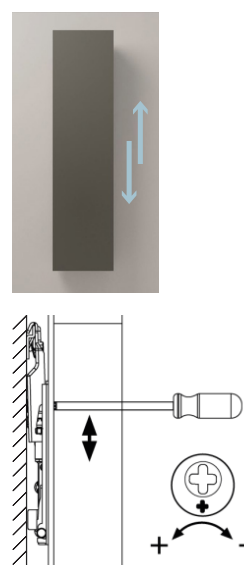
1.3 Adjust the screws to the desired height



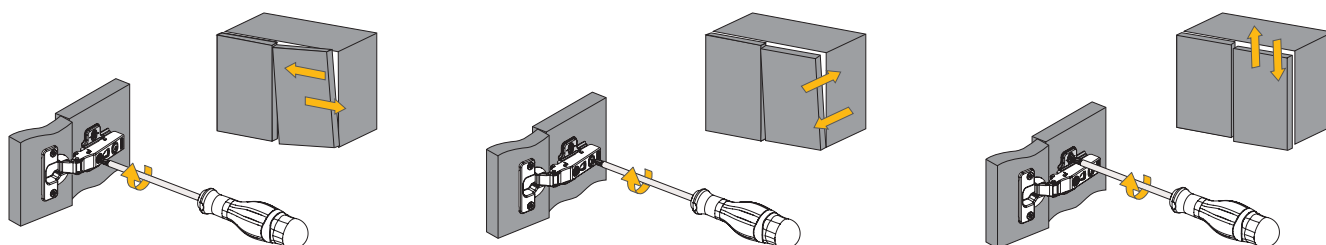
1.4 Fix the unit to the wall



1.5 Adjust and level



2. Door regulation



Failure to install per the installation instructions may invalidate your guarantee, please follow instructions carefully. In the unlikely event that this product should fail please contact the retailer from which the item was purchased.