

PRODUCT DATASHEET

Davoli Short Projection Wall-hung toilet

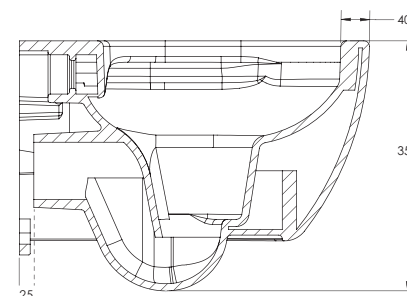
tissino

Your bathroom, made **beautiful**.

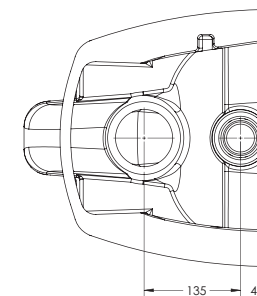
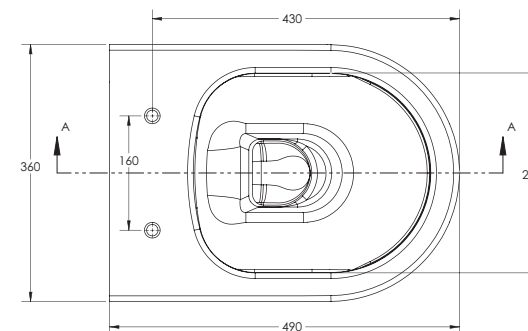


A contemporary and versatile short-projection wall-hung toilet set, available in a range of colours

TECHNICAL DRAWING



SECTION A-A
SCALE 1 : 4



PRODUCT DETAILS

Finishes	Pan	Gloss white, Matt white, Matt black
Dimensions	Height	350 mm
	Width	360 mm
	Depth	490 mm
Material	Glazed ceramic	
Waste connection	Ø100 mm	
Flush pipe connection	Ø55 mm	
Wall fixings	180 mm centres	
Weight	26 kg	
Warranty	10 years	
Codes		
Pan finish	Fittings finish	Code
Gloss white	Chrome	TDA-208-WH-CP
	Matt Black	TDA-208-WH-MN
	Brushed Brass	TDA-208-WH-BB
	Brushed Nickel	TDA-208-WH-BN
Matt White	Chrome	TDA-208-MW-CP
	Matt Black	TDA-208-MW-MN
	Brushed Brass	TDA-208-MW-BB
	Brushed Nickel	TDA-208-MW-BN
Matt Black	Chrome	TDA-208-MN-CP
	Matt Black	TDA-208-MN-MN
	Brushed Brass	TDA-208-MN-BB
	Brushed Nickel	TDA-208-MN-BN
Pack contents	Wall hung pan, colour matched seat, seat fittings	

See separate datasheets for information on concealed cisterns